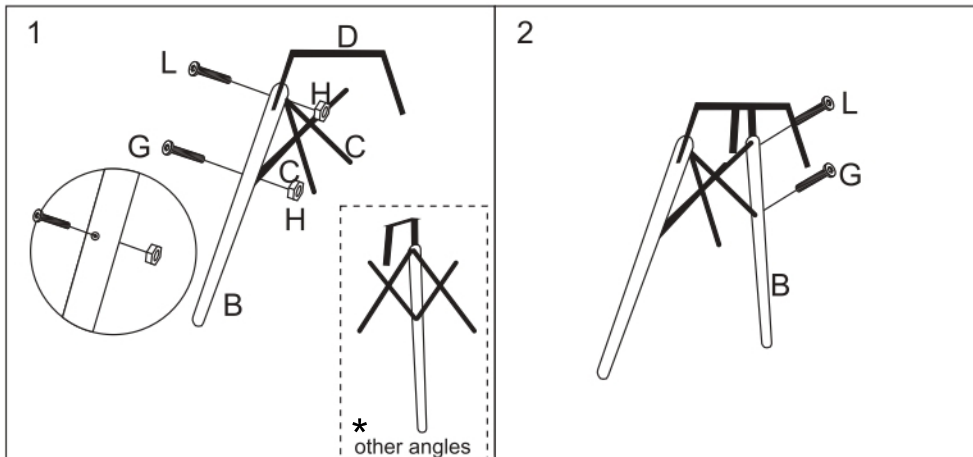
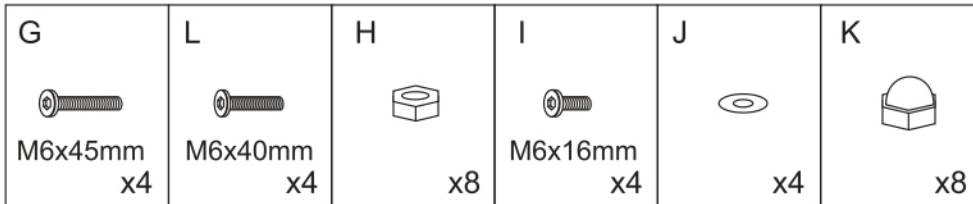
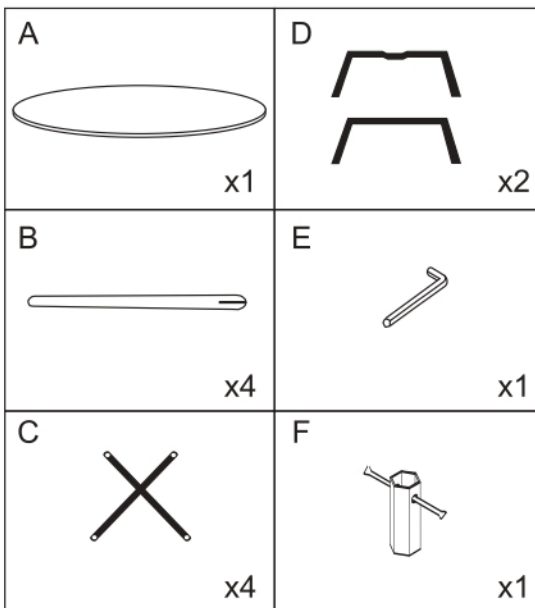
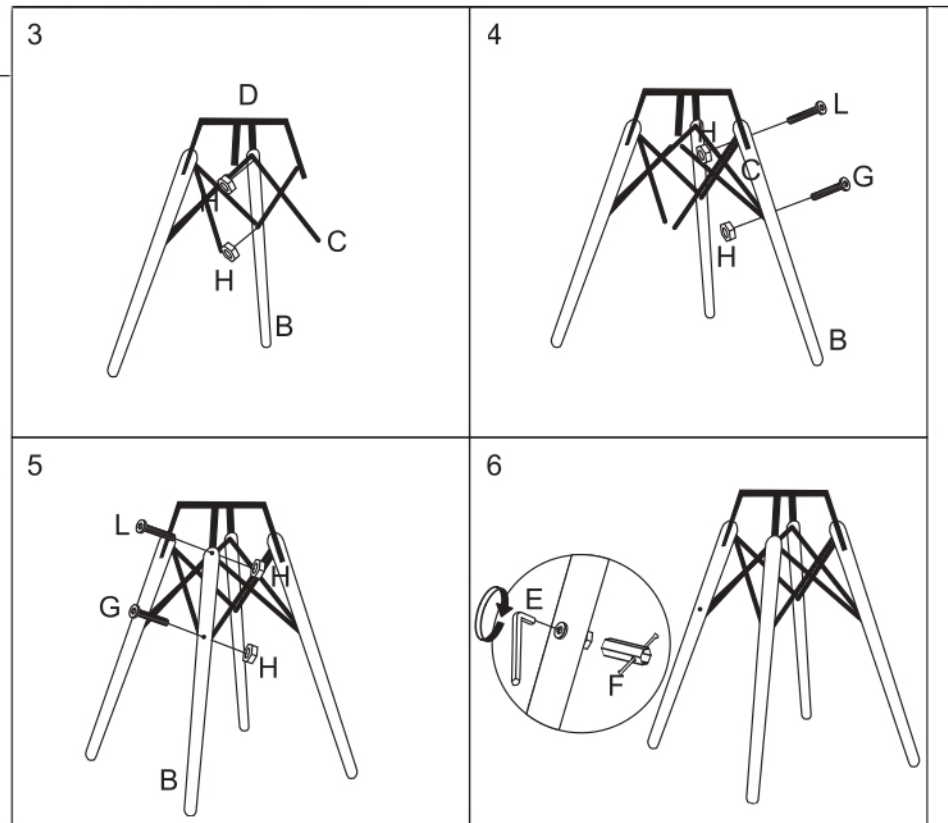


GAMIN 2 NEW HY-T08



* SK: iné uhly, CZ: jiné úhly, SI: drugi koti, RO: alte unghiuri, HR: drugi kutovi, HU: egyéb szögek



SK: prosím neťahujte všetky skrutky až do kroku 6

CZ: prosím neťahujte všechny šrouby až do kroku 6

SI: prosimo, ne privijte vseh vijakov do 6. koraka

RO: vă rugăm să nu strângeți toate șuruburile până la pasul 6

HR: nemojte zatezati sve vijke do koraka 6

HU: ne húzzon meg minden csavart a 6. lépésig

